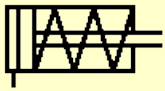


SIMBOLOGÍA NEUMÁTICA

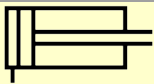
Cilindros

Símbolo:

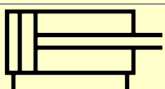
Descripción:



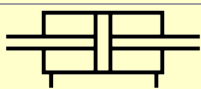
De simple efecto. Retorno por muelle.



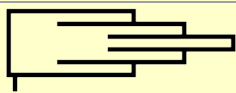
De simple efecto. Retorno por fuerza externa.



De doble efecto.



De doble efecto con doble vástago.

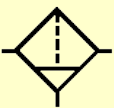


De simple efecto telescópico.

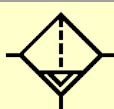
Unidades de Tratamiento del Aire

Símbolo:

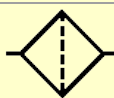
Descripción:



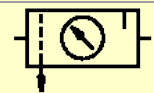
Filtro con purga de agua manual.



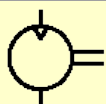
Filtro con purga de agua automática.



Filtro en general.



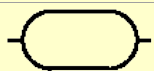
Unidad de acondicionamiento.



Compresor.



Manómetro.

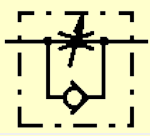


Tanque.

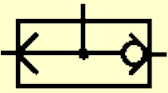
Válvulas

Símbolo:

Descripción:



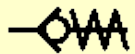
Regulador de caudal unidireccional.



Válvula selectora.



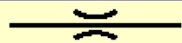
Antirretorno.



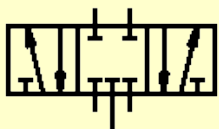
Antirretorno con resorte.



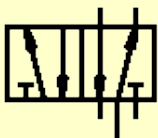
Regulador de caudal.



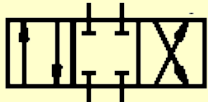
Regulador constante de cauda.



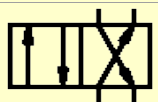
Válvula 5/3.



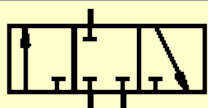
Válvula 5/2.



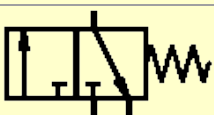
Válvula 4/3.



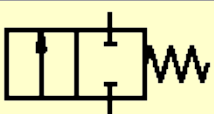
Válvula 4/2.



Válvula 3/3.



Válvula 3/2.

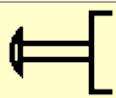


Válvula 2/2.

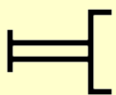
Accionamientos

Símbolo:

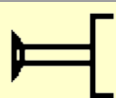
Descripción:



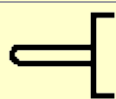
Pulsador de emergencia. Seta.



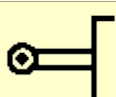
Pulsador en general.



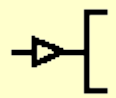
Tirador.



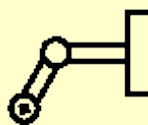
Accionamiento por leva.



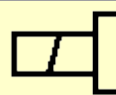
Accionamiento por rodillo.



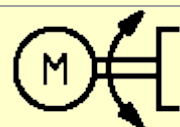
Accionamiento por presión.



Accionamiento por rodillo escamoteable.



Electroválvula.



Accionamiento por Motor eléctrico.



Accionamiento por Palanca.



Accionamiento por Pedal



Retorno por muelle.